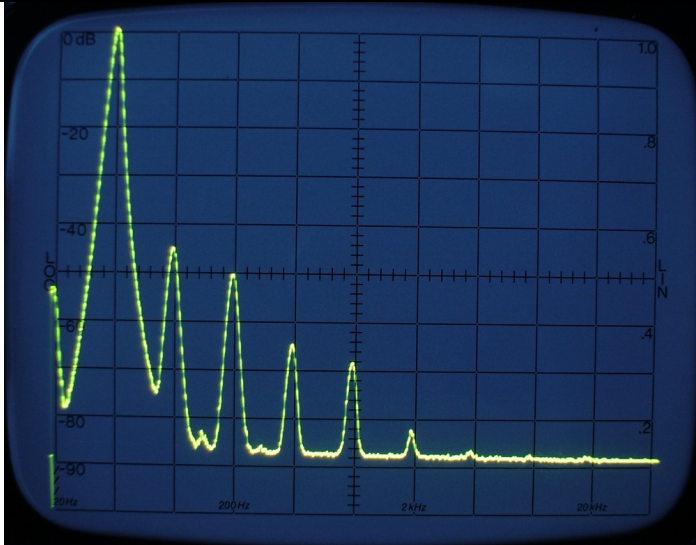
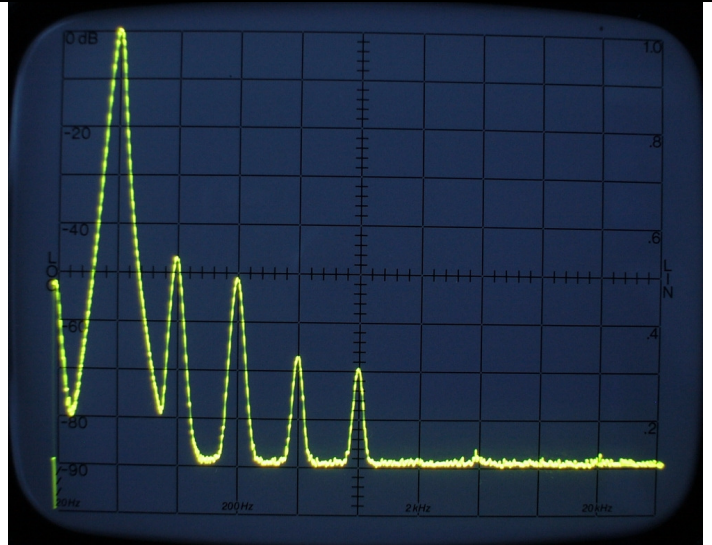


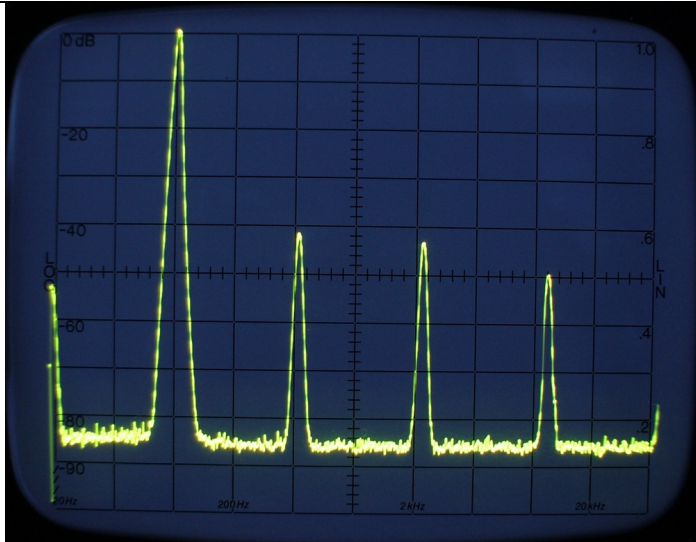
SE845 - Mesures sous 16 Ω



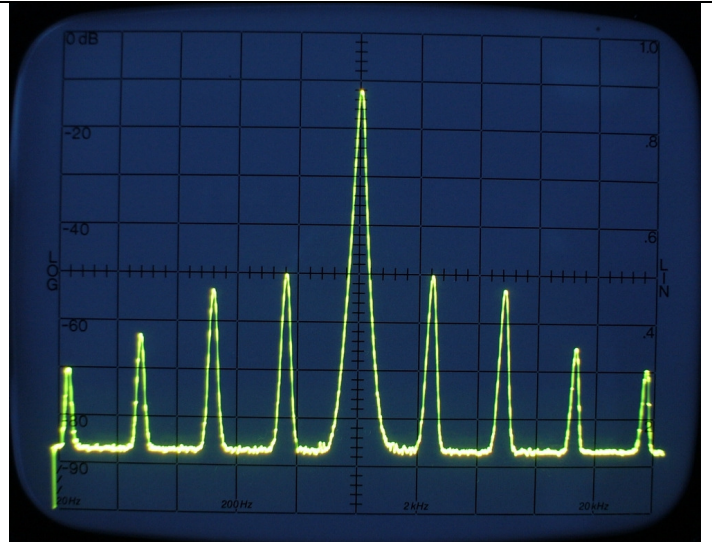
DHT 16W - 100 Hz - 100 Hz / Div



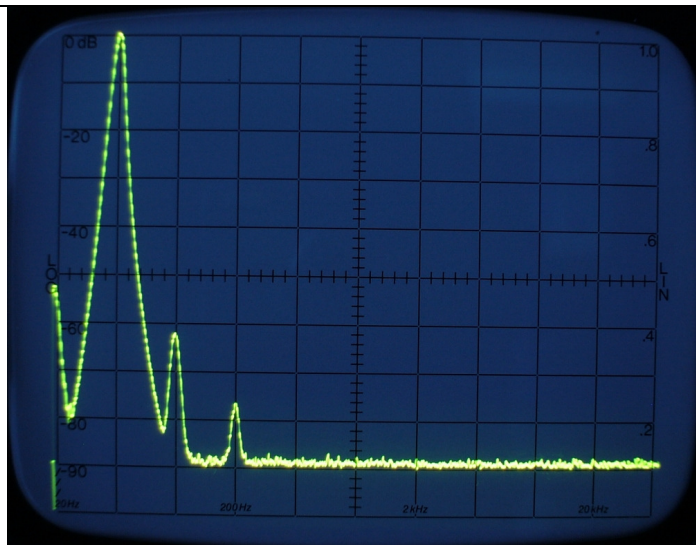
DHT 16W - 1 kHz - 1 kHz / Div



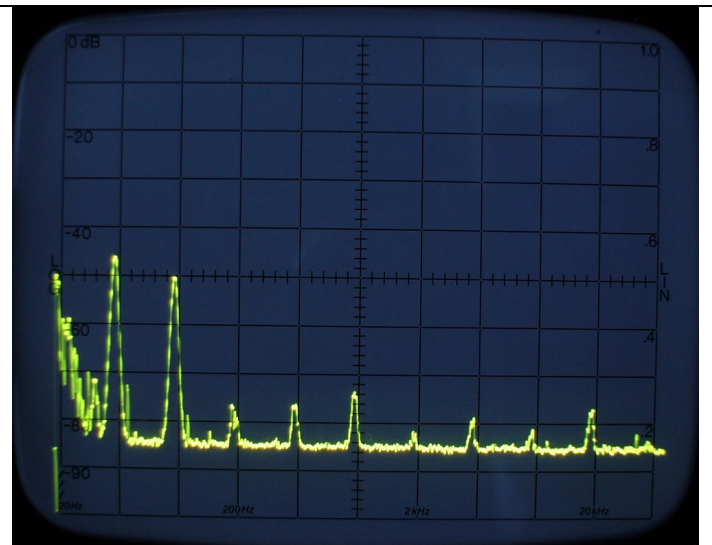
DHT 16W - 10 kHz - 5 kHz / Div



DIM 16W - 60 Hz + 7 kHz - Fc 7 kHz - 50 Hz / Div



DHT 1 kHz - 1 Wrms



Hum & Noise- Ref: -20 dBV